

NEWBURYPORT PUBLIC SCHOOLS



FRANCIS T. BRESNAHAN SCHOOL
PRESCHOOL INFORMATION NIGHT

JANUARY 30, 2025

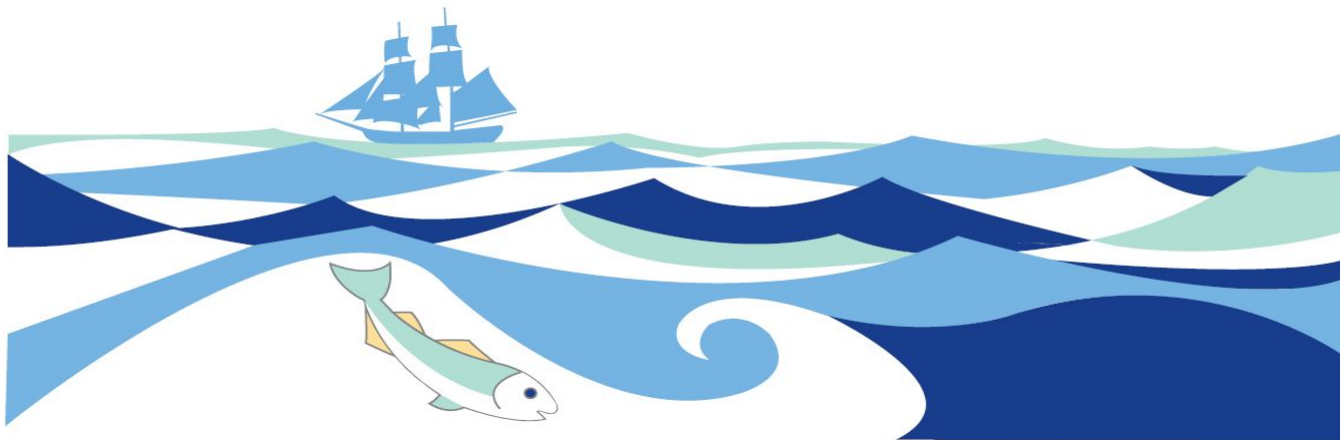
Agenda

6:00-6:15 p.m.

Arrival
Tour Preschool Classrooms
Visit information tables

6:15-6:45 p.m.

Introduction of Staff
General Session
Bresnahan School Information
Preschool Programming
Registration and Lottery Procedures



The Bresnahan Preschool/PreK Team

District Administration

Sean Gallagher - *Superintendent*

Lisa Furlong - *Assistant Superintendent*

Bradley Brooks - *Director of Student Services*

Katie Bartolini - *District Nurse Leader*

Bresnahan Administration

Jamie Sokolowski - *School Principal*

Allison Hamilton - *Assistant Principal*

Integrated Preschool Teachers

Suzanne Simon

Giovanna Foster

Tanasi Fahey

Karen Sullivan

Sam Maguire

Stacey Harriman

SPED Service Providers

Pam Walker - *Special Education Team Facilitation Leader*

Jill Grelle - *Physical Therapist*

Mary Valdez, Katie Garrett- *Occupational Therapists*

Candi Skiba, Julie Clemente - *Speech Language Pathologists*

Other Supports

Valerie Natoli - *Early Childhood Nurse*

Colleen Wile, Melanie Manseau - *School Counselors*

Holly Curtis - *School Social Worker*

Dr. Michele Clark - *School Psychologist*



Meet the Teachers



***Miss Sue** has worked in preschool for more than 25 years. She fell in love with the integrated model when her own children were in preschool as it taught them compassion for others and fostered a lifelong love of learning. She frequently reminds her students to never stop learning! An artist in a prior career, she employs creativity and fun in all aspects of her student's day.*

***Miss Giovanna** has been teaching in the Newburyport Public Preschool Program since 2011. She has a passion for social emotional learning. She provides an environment that encourages students to express their feelings as they work through conflict and setbacks. Miss Giovanna loves spending time at the beach.*



***Miss Tanasi** has been teaching in the Newburyport Public Preschool Program since 2013. She has a passion for preschool aged child development and loves seeing the growth of all her students each year! Her fun fact is she enjoys having “Miss T’s Dance Parties” and dancing to Best Day of my Life!*

Meet the Teachers

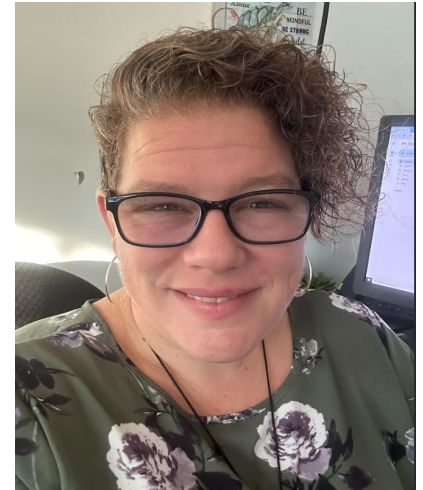
Miss Karen has been teaching preschool for 18 years and can't imagine teaching any other grade. She loves the imagination, creativity, curiosity and laughter of these youngest learners. Miss Karen is proudly a crazy cat lady and yoga enthusiast.



Miss Stacey is a Special Education Teacher who has taught children with Autism and Intellectual Disabilities for the past 16 years. She loves working with this age group, as there is so much progress to see! When not at work, she loves to spend time with her daughter at the beach!



Miss Sam has been teaching in the Newburyport Public Preschool Program since 2016. She has always loved working with children of all ages, but especially has a passion for teaching preschool because it's so much fun learning through play! On the weekends you may spot Miss Sam walking on the rail trail.



Bresnahan Health Services



Valerie Natoli, RN
PK-1

Meet our Nurses
2 full time Dept of Ed.
Certified RN School Nurses



Michelle Thivierge, RN
Gr 2-3

Responsibilities:

- Acute and Chronic care for illness and injury
- Mandated Immunization compliance and mandated screening
- Care Coordination
- Development of Individual Health Care Plans/Emergency Health Plans for students with health concerns
- Provide staff training and support

What is an *Integrated* Preschool?

The Newburyport Public Schools' Preschool Program:

- **Inclusive, developmentally** appropriate
- Children ages **three to four years old**
- **Wide variety** of backgrounds, skill levels and abilities
- **Peer models**



[Massachusetts Guidelines for Preschool Learning Experiences](#)

[National Common Core Standards](#)

Why Choose Our Preschool?

- Beautiful state of the art facility with bright and expansive **classrooms**, advanced **technology** and equipment, and fun **play areas**!
- All teachers are **licensed** by the State of Massachusetts
- Classes are **well supported** by one teacher and one Instructional Assistant. There are up to 15 students per class. At times, whole class activities may be lead by related service providers (e.g. Occupational Therapist, Speech Language Pathologist).
- Students entering our preschool program will transition to their elementary experience for grades K-3 in the **same building** and will have the opportunity to spend up to 6 years at the F.T. Bresnahan School!



Program Overview

We believe:

- All children have **individual differences** which are best supported through high quality teaching and **differentiated** instruction.
- Young children **learn by doing!** Classrooms are play based with **hands on** meaningful activities.
- A rich variety of **developmentally appropriate** experiences that meet all **learning styles** are integrated in the curriculum through individual, small group and large group activities to help children engage in academic and social experiences.
- Every child will feel **valued, respected** and part of a classroom **community** as well as a greater community in the Bresnahan School.



Learning Through Play

- Professional, respectful and student **focused** staff members
- **Inclusive** environment for all learners
- Universal supports provided to **support** learning for all - including using a whole language approach
- **Visuals** to support classroom routines and expectations
- **Developmentally** appropriate manipulatives
- **Social-emotional** supports, including the Zones of Regulation & Social Thinking
- **Playful Learning** gives children the opportunity to be curious and creative, feel connected and feel empowered
 - Reader's Theater
 - Movement and Gross Motor Activities
 - Sensory Exploration
 - Dramatic Play
 - Outdoor exploration



CLASS

schedule

Take a Look at Our Day



8:15-8:30	Arrival
8:30-8:55	Outside Play
8:55-9:25	Snack
9:25-9:45	Morning Meeting
9:45-10:00	Table Activities (literacy/math)
10:00-10:45	Centers/ Playful Learning
10:45-11:00	Clean/Wash Up
11:00-11:30	Lunch
11:30-11:50	Enrichment Opportunities
11:50-12:05	Storytime/Lit Circle
12:05-12:25	Rest
12:25-12:50	Outside Play
12:50-1:00	Cubbies, Parting Circle, Dismissal

Programs Offered

PROGRAM	DAYS/TIME	TUITION
Preschool (3 years old by Aug 31, 2025)	Monday - Friday 8:15 am-1:00 pm	\$ 550 monthly \$ 5,500 annually
Pre-K (4 years old by Aug 31, 2025)	Monday - Friday 8:15 am-1:00 pm	\$ 550 monthly \$ 5,500 annually

Website and Registration Forms

The screenshot shows the website for Francis T. Bresnahan Elementary School. The header includes the school name, address (333 High Street, Newburyport, MA 01950), and contact information (phone: (978) 465-4435). The main navigation menu includes Home, About Bresnahan, News, PreK - K, Grades 1-3, Our Faculty, Parents, Contact Us, and Let's Talk!. The breadcrumb trail reads: You Are Here: Home >> PreK - K >> PreK. The main content area is titled "PreK" and features a large group photo of children in yellow shirts holding colorful balls. A sidebar on the left lists various links: PreK - K, PreK, PreK Programs, PreK Registration Process, PreK Registration Forms, PreK Tuition and Payment, PreK Lottery and Wait list, Kindergarten, Curriculum PreK - K, Child Find Screening Notice, Early Childhood Video, Early Release Days, and 2016-2017 Information Night. The URL at the bottom is www.portk12.ma.us/prek---K/index.html. A hand cursor icon is pointing to the PreK link in the breadcrumb trail.

Registration & Lottery Process

- **Returning students or siblings of students**

- January 27 – January 31 (school days only)
 - between 10:00 AM - 2:00 PM

- **New students**

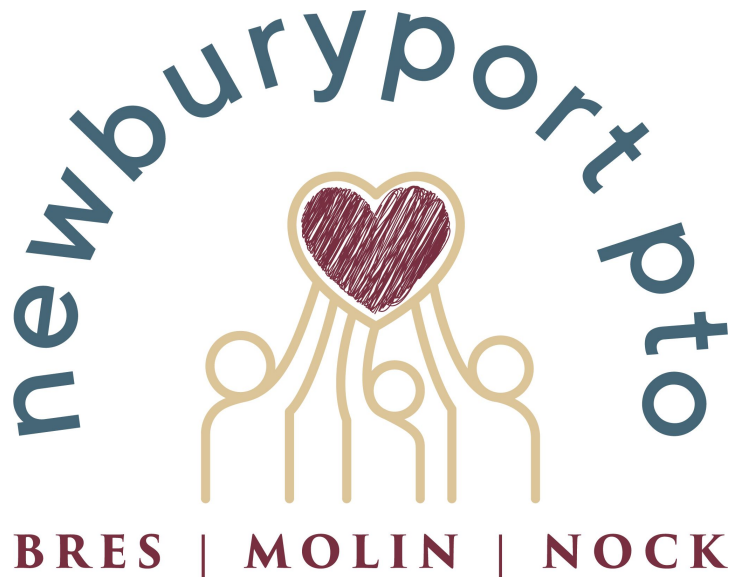
- February 3 - 14 and February 24 - 28 (school days only)
 - between 10:00 AM - 2:00 PM

- **Lottery** will be held on Thursday, March 6, 2025

- Lottery results will be posted Friday, March 7, 2025

- **Enrollment** letters will be mailed home and returned by mid-March

Join the PTO



- Monthly meetings- all are welcome!
- A great way to meet other families and feel a part of the school community!
- We raise almost \$100K for enrichment programs, field trip transportation, teacher requests and more.
- We organize family friendly events and teacher appreciation events to build community.
- Check out our website for more info!

Required Forms & Complete Applications

Only **complete** applications will be accepted. The following documents are **required** to obtain a lottery number:

- \$300.00 Registration fee, check or money order made payable to the Newburyport Public Schools (no cash or credit accepted)
- Preschool Application Form
- Your child's birth certificate (copy)
- Your child's most recent health record including lead test, immunization and physical (copy)
- Newburyport Public Schools Enrollment Form
- Certification of Address Form
- Home Language Survey
- Parent Questionnaire